

Crawly Creatures Match-Up & Memory

For more Montessori Printables, visit [1+1+1=1 Montessori Printables](http://www.1plus1plus1equals1.com)

Match-Up games are a [Montessori](#) based idea, with the goal of improving a child's visual discrimination abilities. I have added in the names of the objects to bring print awareness in also. You may choose not to use the print, by trimming off the words at the bottom of the game boards and using the non-labeled cards.

Options

Match-Up

- ~Print one set of images {either with or without words}, on cardstock, laminated if possible. Cut out the squares.
- ~Print each game board, on cardstock and laminated if possible. Leave game board whole.
- ~Give your child one game board at a time and increase difficulty depending on his/her age.
- ~Give your child an image card and have him/her find the matching image and place it underneath in the empty square.
- ~Your child is successful when all images are matched up!

Memory

- ~Print two sets of image cards, I use one with words and one without words.
- ~Start with just a few sets and work your way up to the entire set.

Copyright © 2015 Carisa Hinson $1 + 1 + 1 = 1$

www.1plus1plus1equals1.net

All rights reserved by author.

Permission to copy for single classroom/home use only.

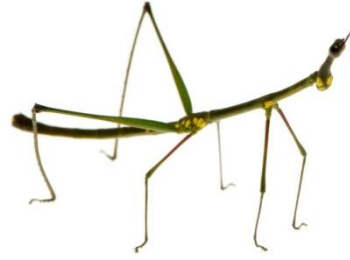
Electronic distribution limited to single classroom/home use only.

Want to share? Link to my blog post/website, NOT the PDF file itself.

[Full Terms of Use here](#)

All images © [Thinkstock](#)







bee



fly



locust



ladybug



stinkbug



mosquito



wasp



butterflies



beetles



moth



caterpillar



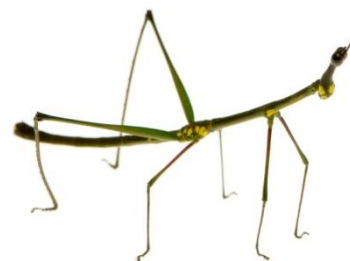
leaf bugs



daddy long legs



cricket



walking stick



dragonfly



grasshopper



ant



snail



slug



worm



centipede



roly poly



firefly



bee

fly

locust

ladybug



stinkbug

mosquito

wasp

butterflies

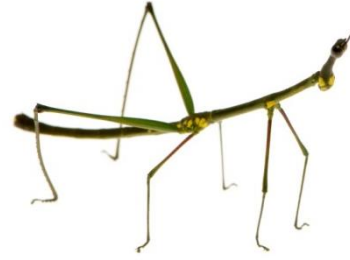


beetles

moth

caterpillar

leaf bugs



daddy long
legs

cricket

walking stick

dragonfly



grasshopper

ant

snail

slug



worm

centipede

roly poly

firefly